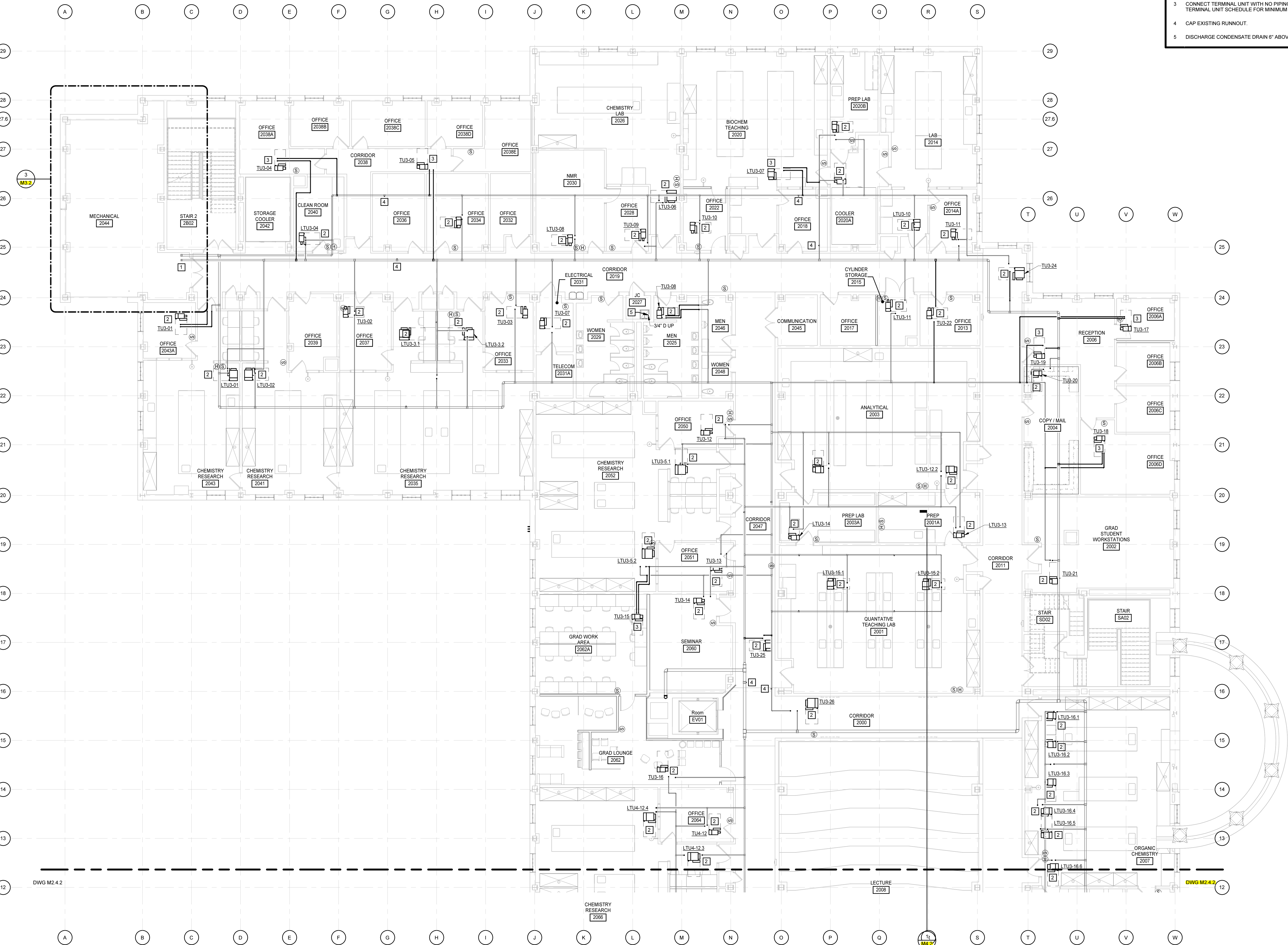


3/25/2019 4:32:29 PM



KEYNOTES	
APPLIES TO THIS DRAWING	
1	REFER TO ENLARGED PLAN FOR CONTINUATION.
2	CONNECT TERMINAL UNIT TO EXISTING HWS & HWR PIPING RUNNOUTS. CUT AND REROUTE RUNNOUTS AS REQUIRED TO INSTALL ALL VALVES AND ACCESSORIES. REFER TO COIL CONNECTION DETAIL. REFER TO TERMINAL UNIT SCHEDULE FOR MINIMUM RUNNOUT SIZE.
3	CONNECT TERMINAL UNIT WITH NO PIPING RUNNOUTS TO MAIN. REFER TO TERMINAL UNIT SCHEDULE FOR MINIMUM RUNNOUT SIZE.
4	CAP EXISTING RUNNOUT.
5	DISCHARGE CONDENSATE DRAIN 6" ABOVE MOP SINK.

MOSELEYARCHITECTS

911 N. WEST STREET, SUITE 205 RALEIGH, NORTH CAROLINA 27603
PHONE (919) 845-0091
MOSELEYARCHITECTS.COM

PROGRESS
PRINT, NOT FOR
CONSTRUCTION

Dobo Hall Renovation - Package A

SCO PROJECT NO. 18-19798-01A

UNC Wilmington

4978 CAHILL DR, WILMINGTON, NC 28403

PROJECT NO.	DATE
580999	MARCH 27, 2019
REVISIONS	
DATE	DESCRIPTION

SECOND FLOOR
PLAN - PART A -
PIPING

M2.3.2

SECOND FLOOR PLAN - PART A - PIPING

1/8" = 1'-0"

